



A new organizational structure

Bellevue-Seattle-Everett
Washington, USA

History of Clubhouses in Washington State

- ▶ From the late 80s to the mid- 2000's, Washington State had over 13 Clubhouses, which over half were accredited
- ▶ Medicaid (A government insurance program) was the **primary** funding source for all Clubhouses
- ▶ In 2012, the funding source (called the 1915 (b) OR B-3 Waiver for Medicaid) went away for all Clubhouses
- ▶ By 2014, only **two** Clubhouses remained in Washington State
 - ▶ HERO House in Bellevue, Washington (founded 2005)
 - ▶ Evergreen Club in Spokane, Washington (founded 1981)

The need for a new structure

Seattle Clubhouse

- ▶ The need to bring a Clubhouse back to Seattle, Washington was extremely important
- ▶ Efforts started by Larry Clum in 2016
- ▶ January 2018, it was unanimously determined by both Board of Directors of HERO House and Seattle Clubhouse to merge into one entity

HERO House

- ▶ Survived the 2012 budget cuts due to diversity of funding sources
- ▶ Purchased a new building in 2016 for expansion purposes
- ▶ Renamed Bellevue Clubhouse in 2018 with the merger of Seattle Clubhouse
- ▶ 2018: HERO House NW was born

Benefits of an “umbrella” organization

- ▶ Cost effectiveness
 - ▶ Shared services & economies of scale
 - ▶ Accounting -Administrative support- Fundraising
- ▶ Larger voice and presence to the community
 - ▶ Broaden networking capability among key government and private sectors
- ▶ More attractive to private and public donors and government funders
 - ▶ Larger footprint in our community
- ▶ Stronger structure to withstand economic and/or political adversity
 - ▶ Alleviates administrative burdens placed on small organizations
 - ▶ Braided funding with private and public dollars
 - ▶ Allows us to focus on providing quality services and deliverables while maintaining full Accreditation

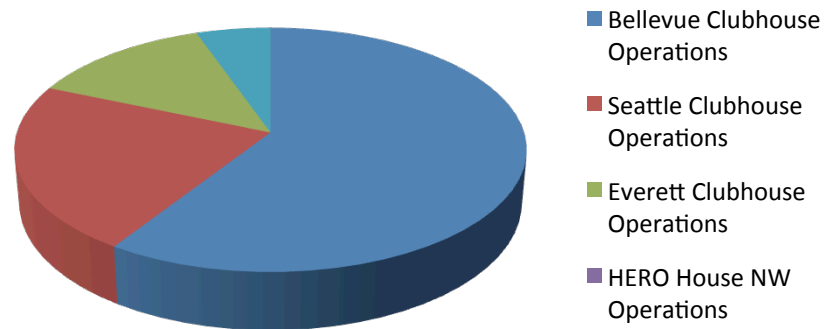
Benefits of an “umbrella” organization

- ▶ Integration into the behavioral health communities
 - ▶ Ensures long-lasting sustainability for recovery for those living with mental illness
 - ▶ Only will operate and expand Accredited Clubhouses
 - ▶ Guards against similar programs duplicating efforts administratively and competing for funding
- ▶ **MOST IMPORTANT:** Increased member options with more Clubhouse opportunities!

Cost Comparison

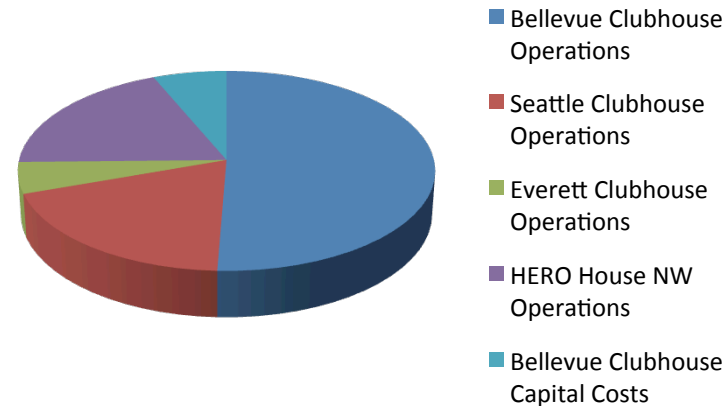
Without HHNW- 3 Clubhouses

**2019 projected expenses without
HHNW ~\$1.9 million**



HHNW as one organization

**2019 HHNW projected
expenses ~\$1.6 million**



Challenges we have faced

- ▶ Identity of individual clubhouses vs. HERO House NW
- ▶ The first few years of the organizational structure
 - ▶ Going from two Executive Directors of individual Clubhouses to a CEO and COO
- ▶ Splitting the work of HERO House NW amongst the three Clubhouses
 - ▶ Who has ownership?
- ▶ Different county/government structures for each Clubhouse
 - ▶ Different funding streams for each region

What is HERO House NW?

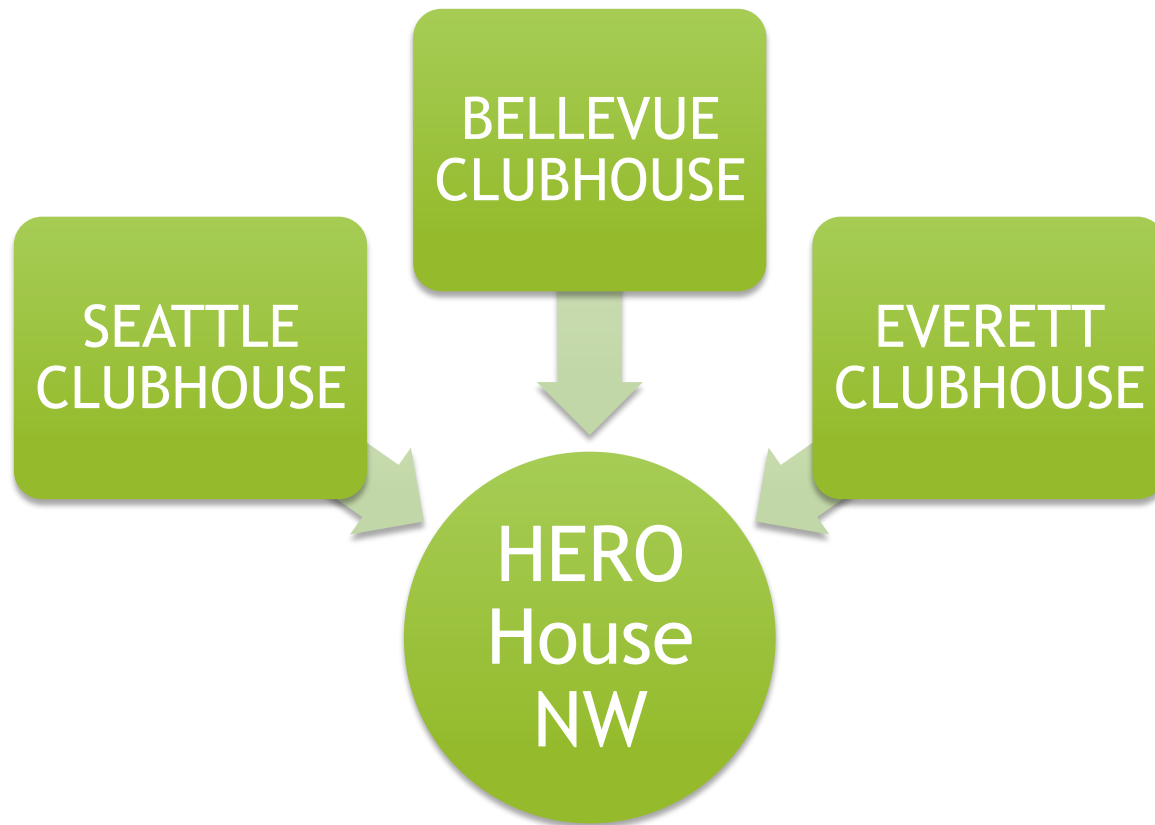
HERO House NW

- ▶ HERO House NW became the new name of the entire organization
 - ▶ **Our Vision:** We envision a world where people living with serious mental illness thrive in communities of hope and opportunity
 - ▶ **Our Mission:** To champion behavioral health recovery by facilitating Clubhouse expansion throughout the Puget Sound region.

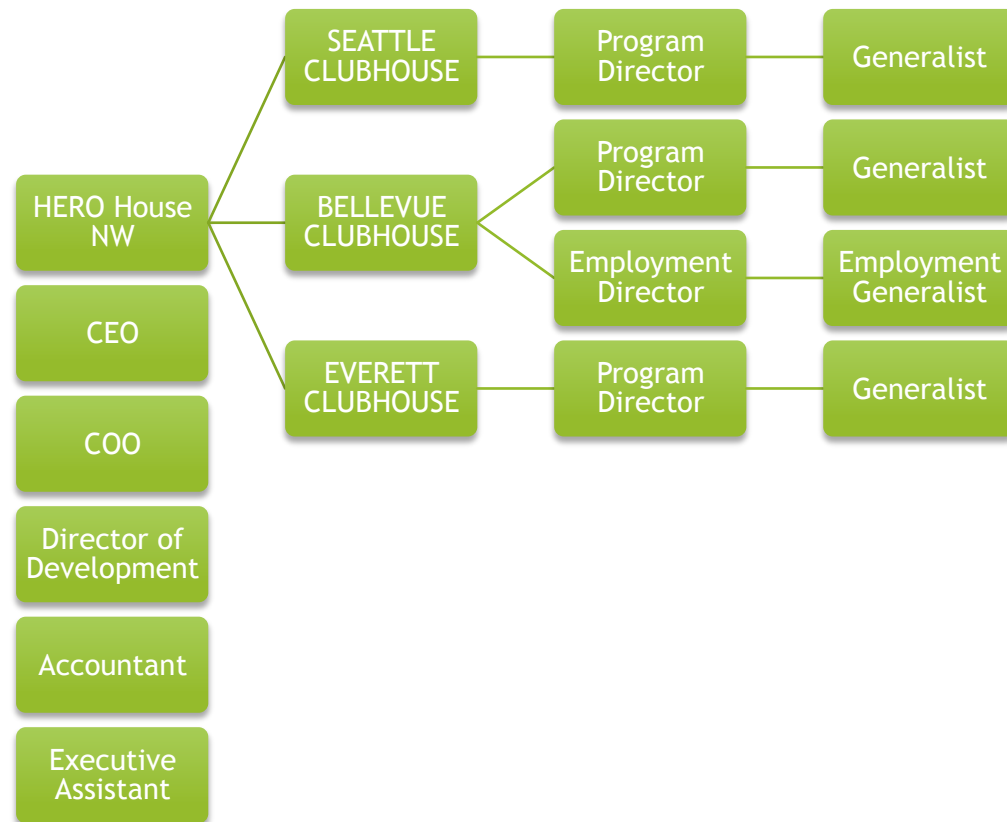
Our 3 Clubhouses



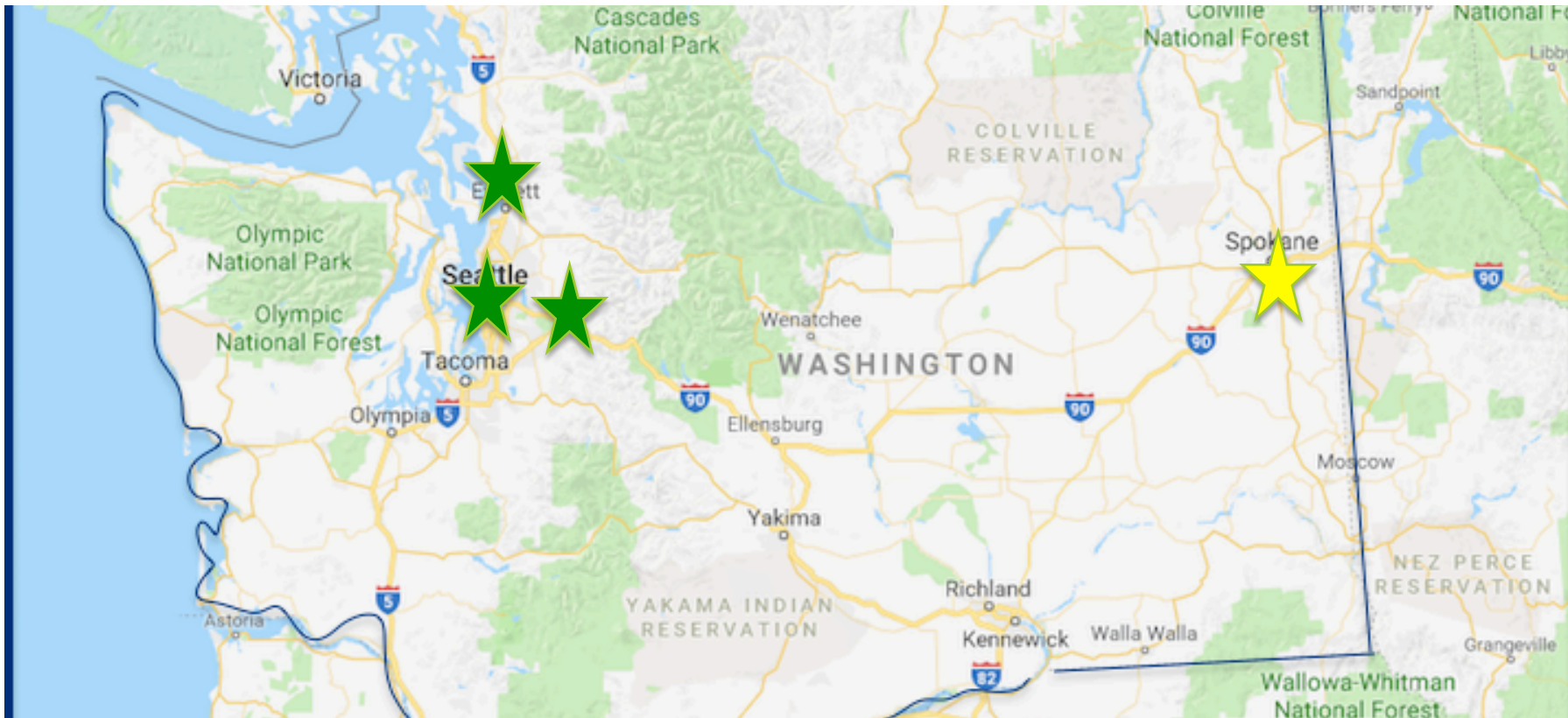
Organizational Structure



Organizational Structure



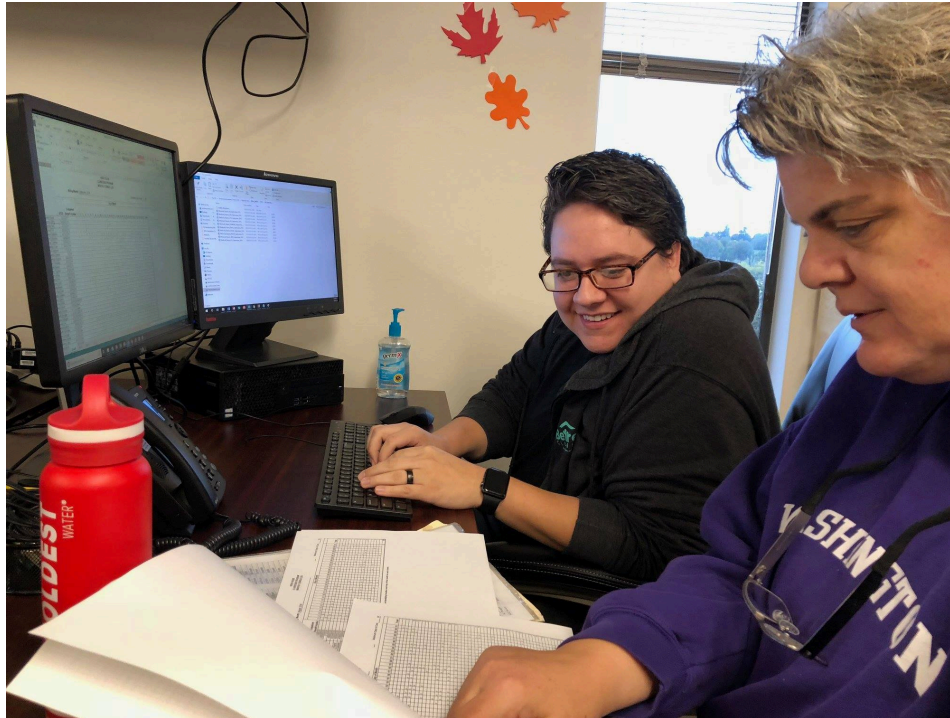
Map of where we are...





Bellevue CLUBHOUSE

A program of HERO House NW





Everett

CLUBHOUSE

A program of HERO House NW

